



1 | Before You Begin

WARNING: Before you set up and operate your Dell system, review the safety instructions that shipped with your system.

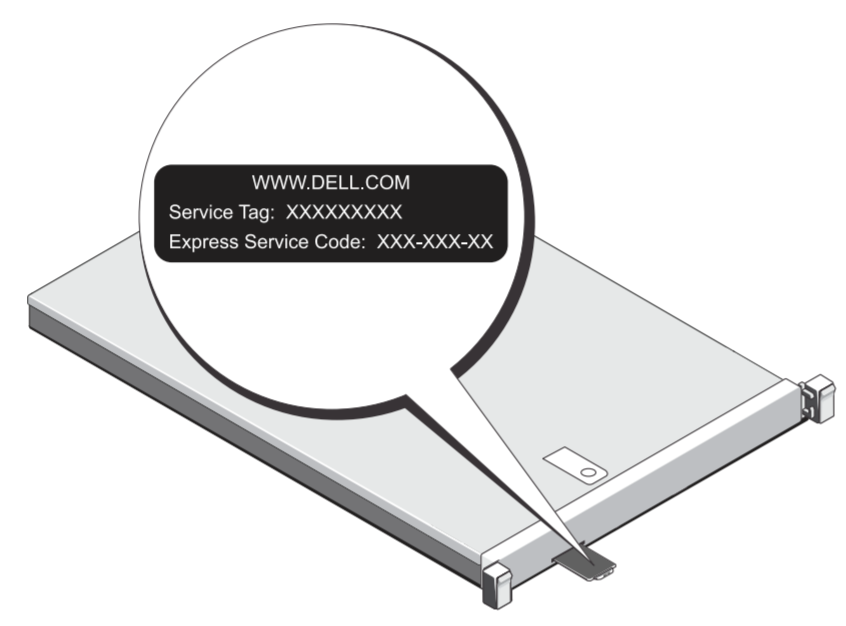
Read the Dell Software License Agreement

- Before using your system, read the Dell Software License Agreement that came with the system.
- You must consider any media of Dell installed software as BACKUP copies of the software installed on your system.
- If you do not accept the terms of agreement, call the customer assistance telephone number. For customers in the United States, call 800-WWW-DELL (800-999-3355). For customers outside the United States, see dell.com/support and select your country or region from the bottom of the page.
- See:
 - dell.com/support/manuals for documentation and information updates.
 - software.dell.com/support for technical support.

Locating Your System Service Tag

- Your system is identified by a unique Express Service Code and Service Tag. Pull out the information tag in front of your system to view the Express Service Code and Service Tag.
- Save this information for future reference. This information is used by Dell to route support calls to the appropriate personnel.
- Use the Service Tag to obtain the AppAssure software license key.

NOTE: The illustrations in this document are not intended to represent a specific system.

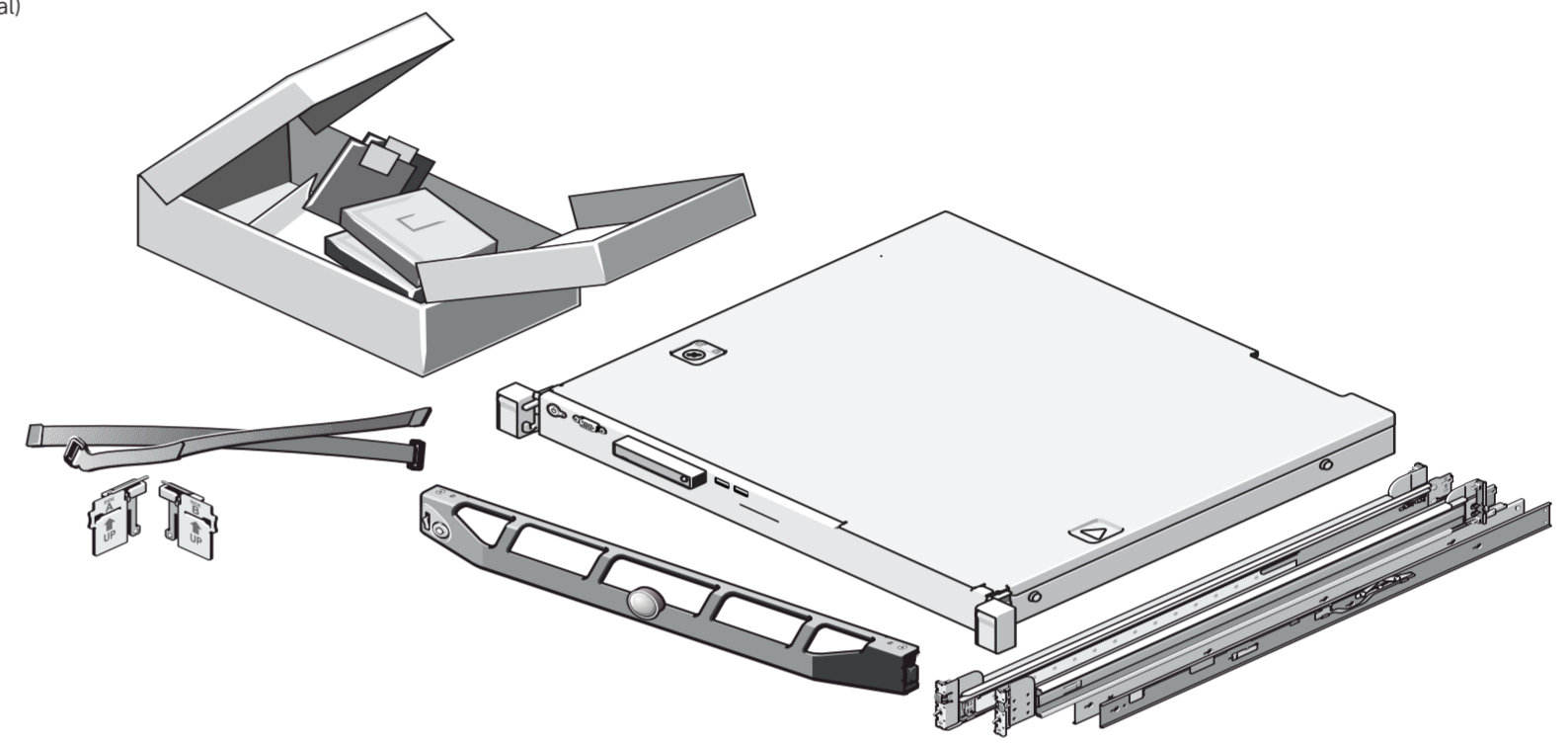


2 | Verifying System Components

Dell DL1000 System

Includes:

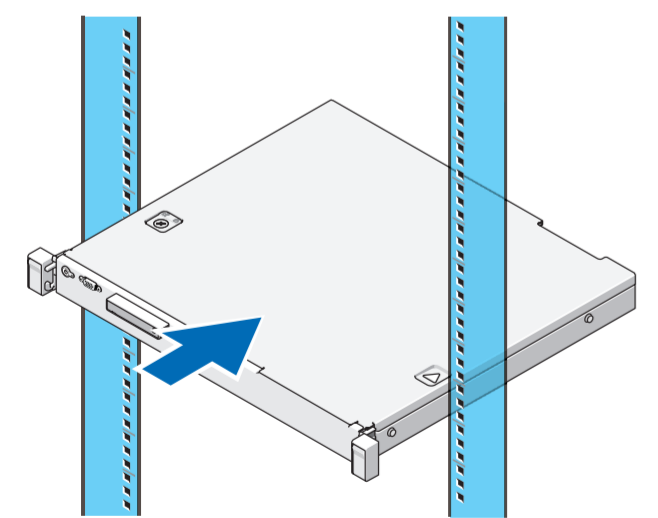
- System bezel
- Power cable
- Power cable retention strap
- Optional mounting rails (1 pair)
- Cable management arm (optional)
- System documentation



Check for documentation and information updates on dell.com/support/manuals. Always read the updates first because they often supersede information in other documents.

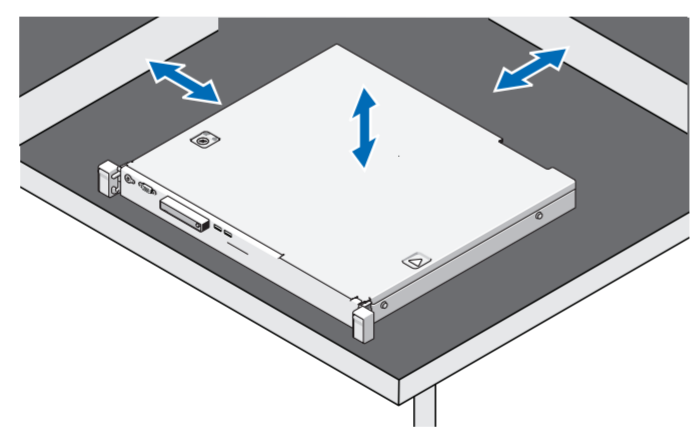
3 | Setting Up Your System

Installing Your System In A Rack



Assemble the rails and install the system in the rack following the safety instructions and the rack installation instructions provided with your system.

Using The System Without A Rack



You can use the system without the server rack. When you are using the system without a rack, ensure that you follow these guidelines:

- The system must be placed horizontally on a solid, stable surface that supports the entire system.
 - NOTE:** The system must not be placed vertically.
- Do not place the system on the floor.
- Do not place anything on top of the system. The top panel may deflect under the weight and cause damage to the system.
- Provide adequate space around the system for proper ventilation.
- Install the system under the recommended temperature conditions as stated in the Getting Started Guide.

4 | Pre-installation Requirements

Network

- An active network with available Ethernet cables and connections.
- A static IP address and DNS server IP address, if not provided by Dynamic Host Configuration Protocol (DHCP).

User Account

To set up the DL Backup to Disk Appliance, use an account with administrator privileges.

Licenses

Your system is shipped with a 30-day temporary AppAssure software license. To obtain permanent license(s), go to dell.com/DLActivation and complete the registration. For information, see the *Dell DL1000 Appliance Deployment Guide* at dell.com/support/manuals.

Software Compatibility

If the DL Backup to Disk Appliance is connected to an existing backup environment, it is recommended that the existing backup environment uses the same AppAssure software version that is installed on the backup appliance.

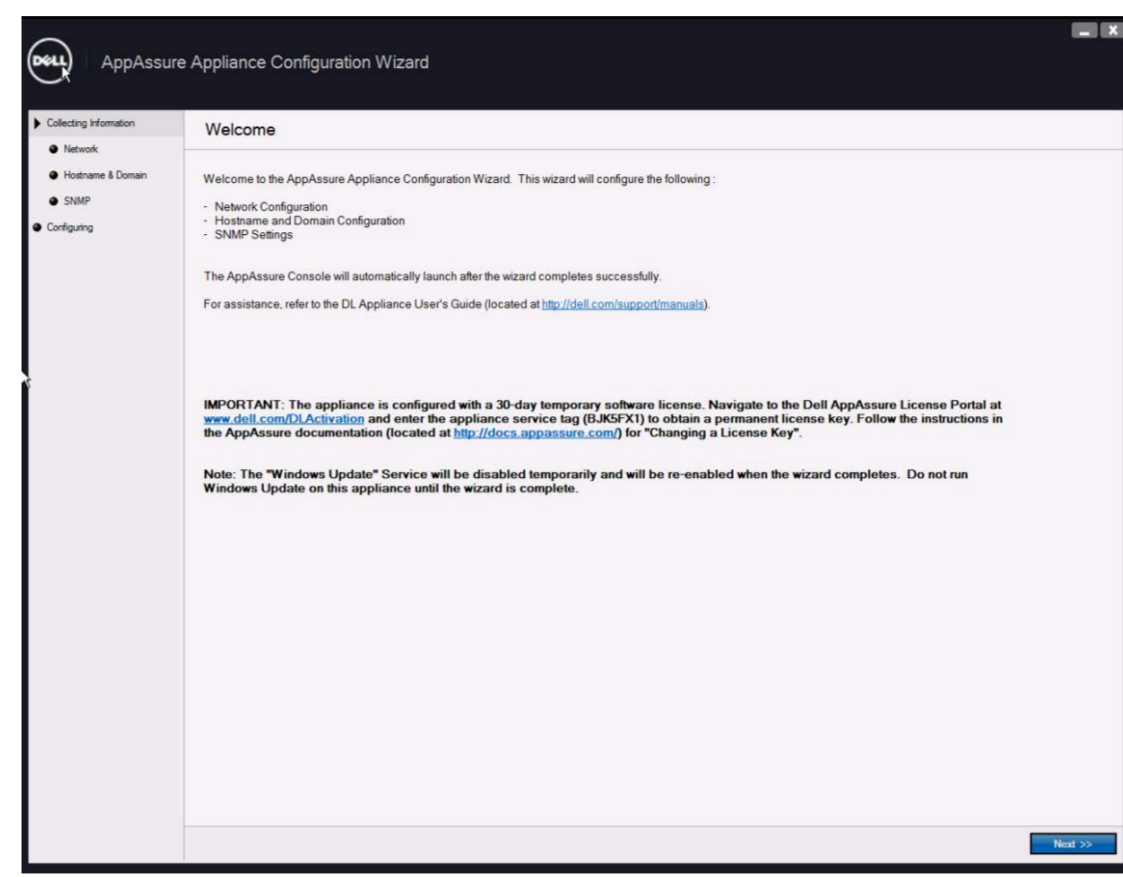


5 Installing the DL1000 Appliance Hardware

Install the DL1000 Appliance hardware in the following order:

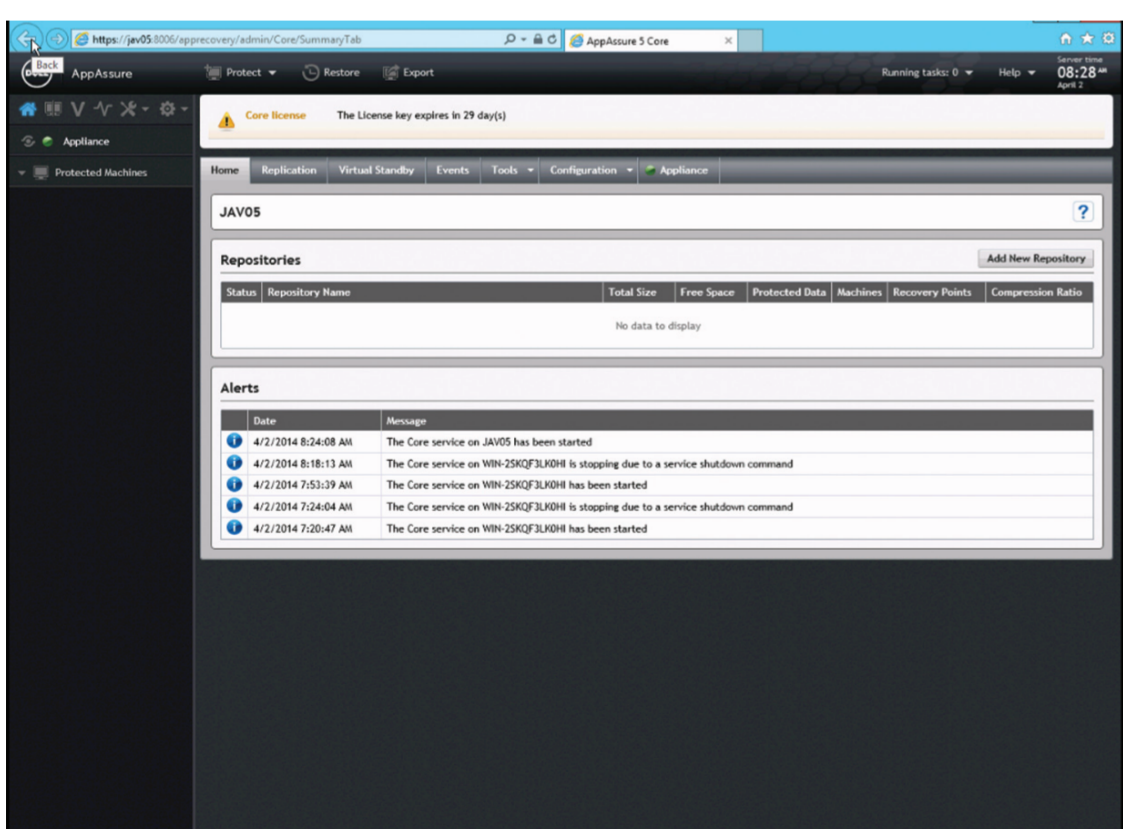
- 1. Install the rails for the DL1000 system.**
For information about installing the rails for the DL1000 system, see the *Rack Installation Instructions* that shipped with the DL1000 rail kit.
- 2. Set up the DL1000 system.**
For information about setting up the DL1000 system, see the *Dell DL1000 Appliance Getting Started Guide* that shipped with the system.
- 3. Install the optional cable management arm for the DL1000.**
For information about installing the Cable Management Arm (CMA), see the *CMA Installation Instructions* that shipped with the CMA kit.

6 Configuring the DL1000 Software



- 1. Turn on the DL1000 system and monitor.**
- 2. The DL1000 system prompts you to change the password.**
After the password is confirmed, the **AppAssure Appliance Configuration Wizard** is displayed.
NOTE: Do not close the **AppAssure Appliance Configuration Wizard**. Do not make any hardware or software changes until the Wizard is complete. Complete all steps in the wizard before configuring NIC bonding and running the Microsoft Windows update.
- 3. Click Next and follow the instructions on the screen to complete the software configuration.**
The wizard allows you to change the host name and the domain settings.
For more information, see the *Dell DL1000 Appliance Deployment Guide* at dell.com/support/manuals.
NOTE: Your system is shipped with a 30-day temporary AppAssure software license. To obtain permanent license(s), go to dell.com/DLActivation and complete the registration.

7 Launching the Console



After the **AppAssure Appliance Configuration Wizard** is complete, the **AppAssure 5 Core Console** is displayed.

NOTE: You can now configure NIC bonding and run the Microsoft Windows update.

8 Additional Information

Important Updates

- Note:** Before installing any updates, complete setting up the **Dell DL 1000 Backup to Disk Appliance**.
- For latest operating system updates, go to the Microsoft website at update.microsoft.com.
 - To reinstall or update Dell software, download the **Dell DL Backup to Disk Appliance Recovery and Update Utility** from dell.com/support/downloads.

Related Documentation

Title	Description
Dell DL1000 Appliance Getting Started Guide	The Getting Started Guide provides an overview of system features, setting up your solution, and technical specifications. This document is shipped with your system and is also available at dell.com/support/manuals .
Dell DL1000 Appliance User's Guide	The User's Guide provides information on configuring, managing, updating, and restoring the system. This document is available online at dell.com/support/manuals .
Dell DL1000 Appliance Owner's Manual	The Owner's Manual provides information about solution features and describes how to troubleshoot the system and install or replace system components. This document is available at dell.com/support/manuals .
Rack Installation Instructions	The rack documentation included with your rack solution describes how to install your system into a rack. This document is shipped with your rack solution and is also available at dell.com/support/manuals .
Release Notes	The Release Notes provides information about deploying the appliance using AppAssure and recovering from failures. This document is available at dell.com/support/manuals .
Dell DL1000 Appliance Interoperability Guide	The Interoperability Guide provides information about the supported hardware and software versions for the Dell Backup to Disk Appliance system. This document is available at dell.com/support/manuals .
Dell DL1000 Appliance Deployment Guide	The Deployment Guide provides information on deploying the hardware and installing the software on the appliance. This document is available at dell.com/support/manuals .